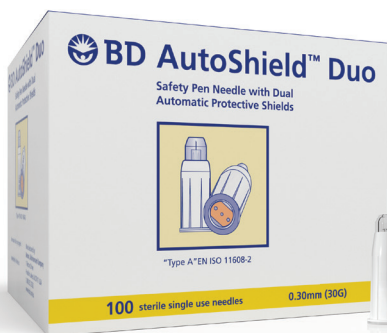


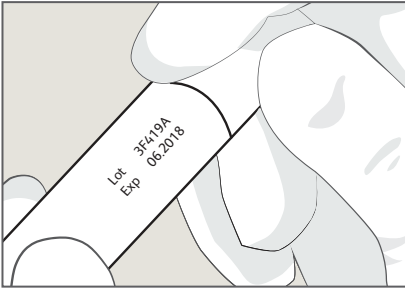


# BD AutoShield Duo™ Safety 5mm Pen Needle

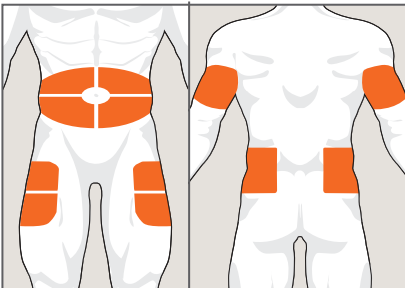
Injection tips<sup>1</sup>



# 1. Prepare the patient and the injection site



- Check the type and expiry date of the insulin.
- Verify the patient identifier.



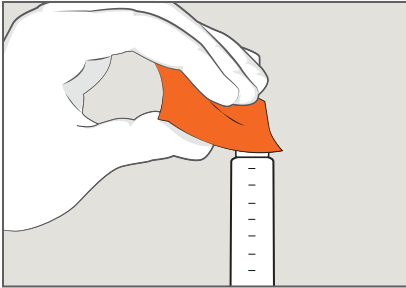
- Choose a healthy injection site. Recommended areas are the:
  - Abdomen
  - Thigh
  - Back of arms
  - Buttocks
- Cleanse the skin.



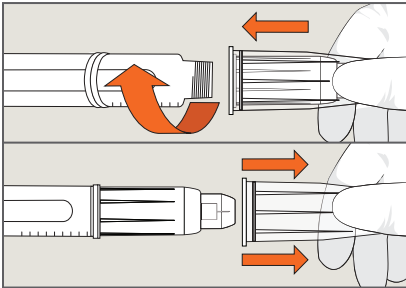
## Remember:

- Rotate between *and* within injection areas.
- Ensure injections are a finger width apart.

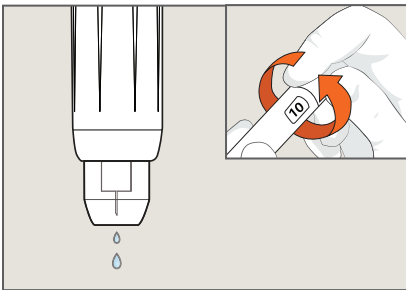
## 2. Prepare the needle



- Remove the pen cap.
- Cleanse the rubber seal on the pen.



- Pull the peel tab off the pen needle.
- Screw the pen needle straight onto the pen—don't over-tighten. Check that it is attached correctly.
- Remove the outer cover.



- Prime the pen pointing downwards, following the manufacturer's instructions for use.
- Select the insulin dose.



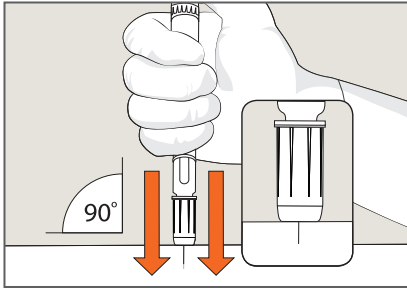
### Remember:

- Prime before every injection.
- 1 pen, 1 patient.

# 3. Administer the injection



**No pinch-up technique required for most patients\***



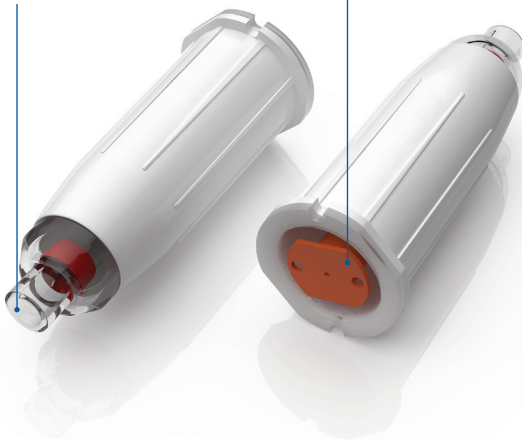
- Palm grip the pen.
- Inject at a 90° angle to the skin.
- Insert in one continuous motion.
- The white sleeve should be flush with the skin.
- Maintain constant pressure.
- Don't change hands.
- Administer the insulin.

**10**

Hold for a count of 10<sup>†</sup>

## After use

Both needle ends  
are protected



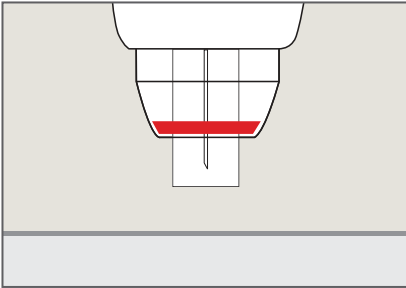
Not actual size.

\* Extremely thin or frail patients may require a pinch-up; hold it for the entire time while administering the injection. Alternatively, consider injecting at a site with more subcutaneous tissue where no pinch-up would be required.

† Refer to insulin pen manufacturer's instructions for use for specific hold times.



## 4. Safely dispose of sharps



- Lift the pen from the skin.
- Confirm that the full dose was delivered.
- Red band indicator shows that the safety shield is locked.

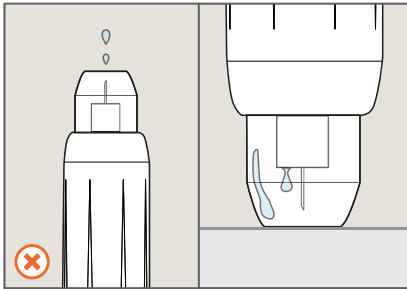


- Hold the white sleeve and twist the pen needle off.
- Orange shield protects the connection end of the pen needle.
- Immediately dispose of the used pen needle into a sharps container.

## Injection tips

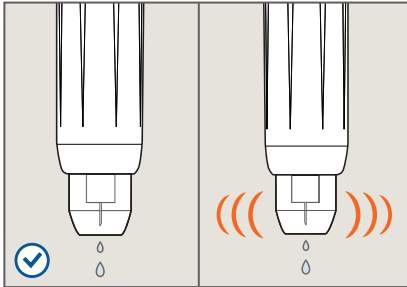
# Insulin on the skin before injection

Priming the pen is an important step to ensure the pen needle is correctly attached, and that an accurate dose will be delivered.



However, when the BD AutoShield Duo™ is primed facing *upwards*, insulin droplets can remain stuck inside the needle shield and fall onto the surface of the skin.

**This is not a sign of pen needle leakage.**



To help prevent priming droplets from getting stuck in the BD AutoShield Duo™ and dripping onto the skin:

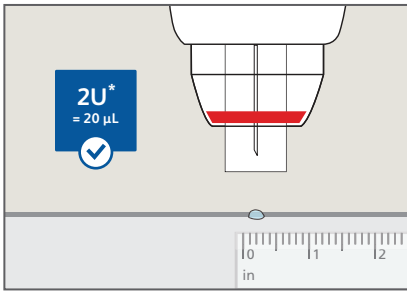
- Prime the pen\* with the needle facing *downwards*.
- Shake off any insulin droplets.

\* Follow the insulin pen manufacturer's instructions for use.

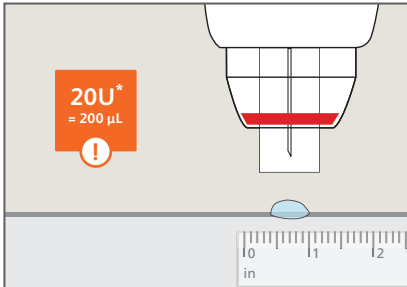
## Injection tips

# Insulin on the skin after injection

After injection, you may see a droplet of insulin reflux on the skin. A small droplet is not considered to be clinically relevant; however, larger amounts may indicate incorrect injection technique.



A tiny droplet of approximately 2 units (*less than 0.2 inch diameter*) is normal.



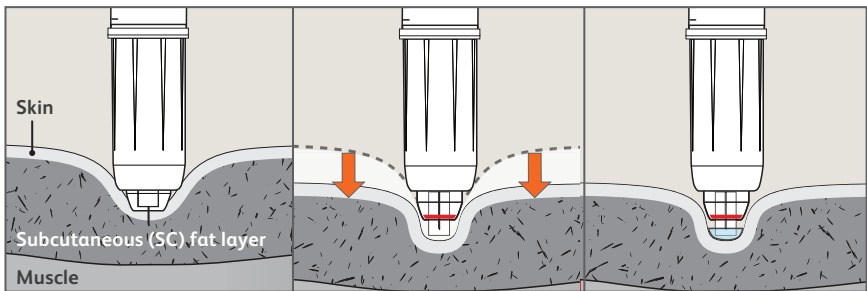
A larger droplet of approximately 20 units (*over 0.59 inch diameter*) is indicative of a problem.

\* U100 insulin.

## Injection tips

# Patient recoiling or flinching away from the needle

If the patient is not prepared and comfortable before administering the injection, they may flinch or recoil when the pen needle touches their skin.



**This can cause the safety shield on the BD AutoShield Duo™ to activate prematurely, resulting in:**

- Incomplete dose delivery.
- Large pooling of undelivered insulin on the skin.

Even a very small movement (*a few millimeters*) by the patient can trigger the safety shield.

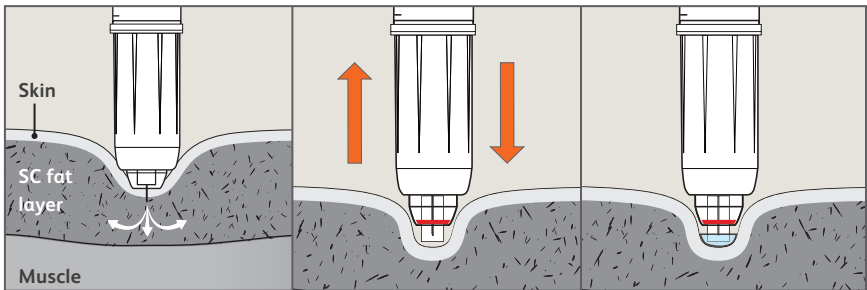
## Help ensure successful and comfortable injections with BD AutoShield Duo™ by:

- Preparing the patient by fully explaining the procedure and gaining their consent.
- Positioning the patient correctly to maximize comfort and minimize the risk of recoil or movement.
- Applying consistent, but not excessive, pressure when performing the injection to keep the white sleeve flush with the skin.

## Injection tips

# Accidentally lifting the pen needle during the injection

It is possible for the clinician to accidentally lift the pen away from the skin by a few millimeters, causing the safety shield to activate prematurely.



Following the premature activation of the needle shield, the pen and pen needle are pushed back against the skin (*i.e.*, a *tiny bounce*).

The clinician continues with the injection, unaware that the shield has been activated and the needle is no longer in the patient's tissue.

Thus, only a partial or no dose is delivered to the patient, and significant residual insulin may be seen on the skin surface.

## Help ensure successful injections with BD AutoShield Duo™ by:

- Holding the pen needle against the skin with consistent (*but not excessive*) pressure.
- Not changing hands during the injection.
- Not lifting the pen until the injection is complete.

# A high level of protection for healthcare workers and patients



## BD AutoShield Duo™ Safety 5mm Pen Needle



- Passive front- and back-end safety shields that protect both sharp ends of the needle throughout the injection process<sup>2</sup>
- A 5 mm pen needle for a one-handed, no-pinch-up injection—providing lower risk of needlestick injuries for healthcare workers and a lower risk of intramuscular injection for patients<sup>2,3</sup>
- A needle concealment shield so that patients don't have to see or be intimidated by the needle
- A red indicator band that automatically deploys with the shield after use, confirming that it is locked and that the needle has been used
- A large barrel for easy handling and attachment

BD catalog #:	NDC/HRI #:	Needle size:	Quantity:
329515	08290-3295-15	30G X 3/16" (5 mm)	100/box



Compatible with leading diabetes medication pens<sup>4</sup>

# Safer insulin injection for all

The BD Diabetes Care portfolio of insulin safety devices—BD AutoShield Duo™ Safety Pen Needle and BD SafetyGlide™ 6mm Insulin Syringe—features exclusive safety technologies aligned with recent clinical recommendations to optimize healthcare worker safety as well as diabetes outcomes.\* Supported by comprehensive BD training and support, healthcare professionals can feel confident delivering the highest standard of care with safety for themselves and their patients.



## Optimizing outcomes for patients with diabetes

A portfolio of pen needles and insulin syringes that meet clinical recommendations for safer and more consistent insulin delivery<sup>2</sup>



## Prioritizing safety


Safety engineered devices that provide a high level of protection



## Enhancing diabetes education and support for patients and HCPs

Industry-leading clinical training and support programs that empower healthcare professionals to provide optimal care for patients with diabetes

\* When compared to standard pen needles.



**References:** 1. BD AutoShield Duo™ Instructions for Use. 2. Frid AH, Kreugel G, Grassi G, et al. New insulin delivery recommendations. *Mayo Clin Proc.* 2016;91(9):1231-1255. 3. Gibney MA, Arce CH, Byron KJ, Hirsch LJ. Skin and subcutaneous adipose layer thickness in adults with diabetes at sites used for insulin injections: implications for needle length recommendations. *Curr Med Res Opin.* 2010;26(6):1519-1530. 4. BD Pen Needle Compatibility Status Summary with Diabetes Care & Non-Diabetes Drug Delivery Devices; Documents Number: 149OTH-0004-02 Rev N Dated: 22 Jun 2017; 10000308903 Ver B Dated: 20 July 2017; 0000321189 Ver A Dated: July 2017.

BD, Franklin Lakes, NJ 07417, U.S.

**bd.com**

© 2018 BD. BD, the BD Logo and all other trademarks are property of Becton, Dickinson and Company. 181275953ASDITB

